

Contents:

► Installation

- Install 601
- Setup Accumark
- Setup 601

► Plotting

- Export Gerber Files
- Plotting Nester Files
- Import Markers
- Plot Markers

► Command Index

- Options
- Main Window
- Save Queue
- Send Queue

The Ioline 601 Software will convert and send Gerber HPGL and MicroMark output files to Ioline apparel plotters. Users of Gerber design systems can now create markers with familiar software but use Ioline apparel plotters for marker output. The 601 software can also convert HPGL output from programs like Nester and CorelDraw.

System requirements: Windows 95/98/NT, 11 MB of hard disk space, and an Ioline apparel plotter connected to a communication port.

Installation

• *Install 601*

1. Close all other applications prior to installation.
2. Insert the installation CD-ROM into the computer CD-ROM drive.
3. The installation should start automatically. If it does not, go to the Start Menu, and click on Run. Browse the CD-ROM drive (usually D:\), and double left click on iosetup.exe.

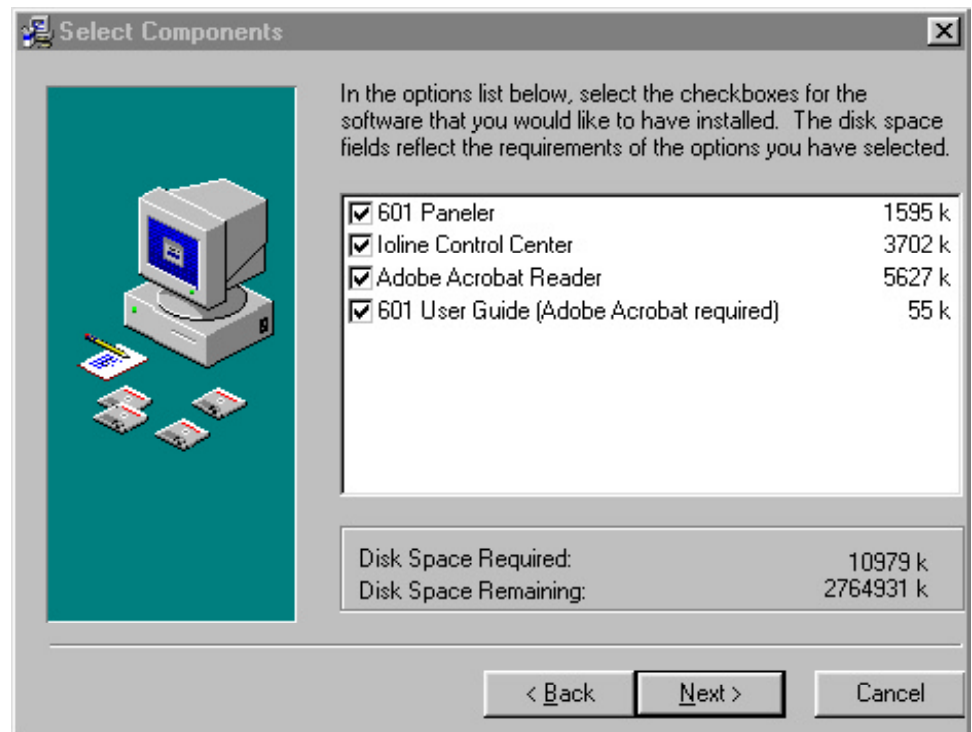


Figure A

Hint: The *Ioline Control Center* is a software program that adjusts plotter settings to optimize performance. See the plotter user guide for information about the *Control Center*.

4. Follow the self-guided installation procedure. The default settings are acceptable for most users. Ioline recommends that you install the Control Center along with the 601 software. Figure A.

Setup

• Setup Accumark



1. Start the **Gerber Accumark Utilities** by double clicking the program icon.

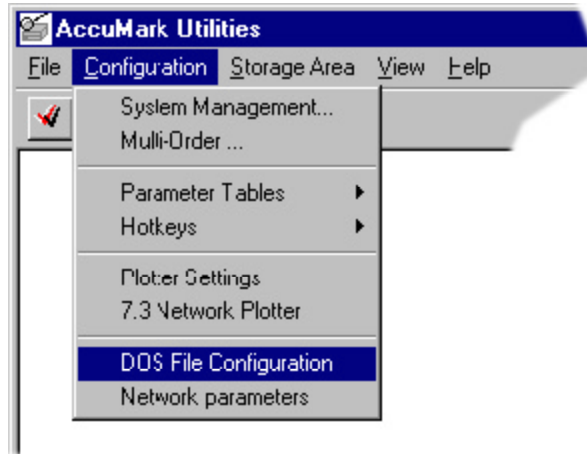


Figure B

2. Open the **Configuration** menu and select **DOS File Configuration**. Figure B.

Hint: Use the folder *C:\HPGL* for the Plot Destination Path if you want to store the Gerber output files in the default input folder for the 601.

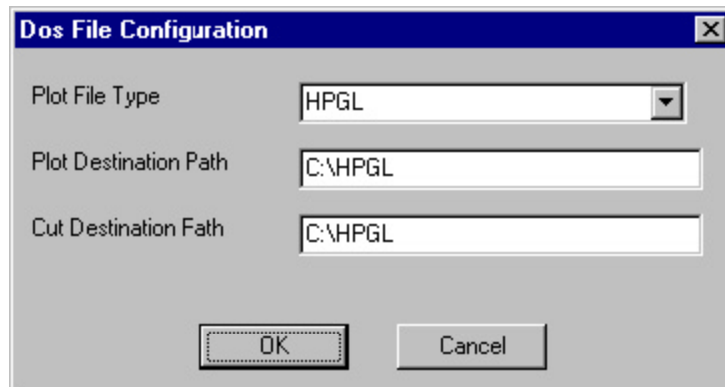


Figure C

3. In the window choose **HPGL** as the plot type. Enter a path for the **Plot** and **Cut** files. Figure C.

• Setup 601

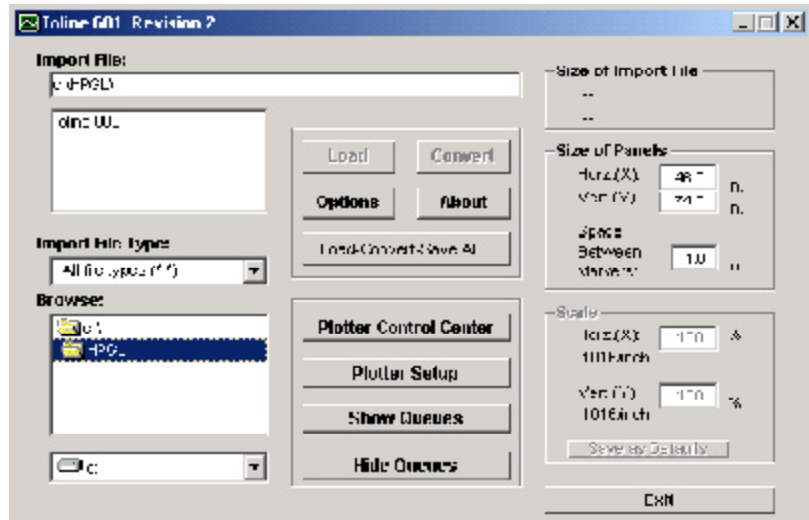


Figure D



1. The Ioline 601 program icon is stored in *Start/Programs/Ioline* or on the desktop. Start the 601 software by double clicking the program icon. The main program window will appear. Figure D.
2. Determine the serial port number on the PC that is used to send data to the plotter. The 601 software can use COM 1 through 4.

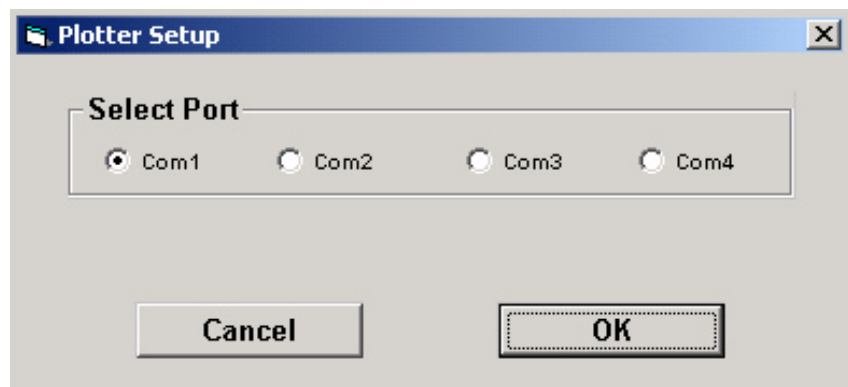


Figure E

3. Press the **Plotter Setup** button. The **Port Setup** window will appear. Figure E.
4. Choose the port determined in step 2 from the list and press the **OK** button.

Plotting

• Export Gerber Files



1. Start the **Gerber System Management** program by double clicking the program icon.



Figure F

2. Choose the **Storage Area** where the marker files are stored. Choose **Enter** when finished. Figure F.

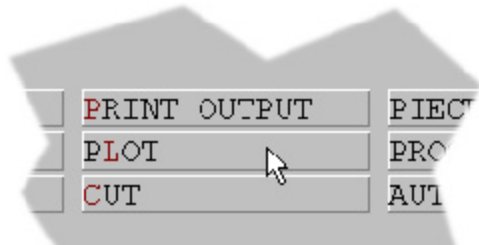


Figure G

3. Choose **Plot** to open the plot window. Figure G.

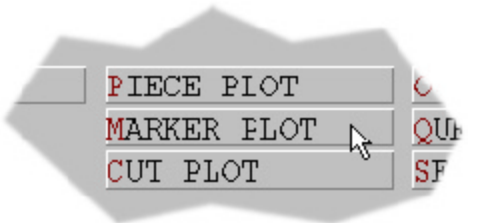


Figure H

4. Press the **Marker Plot** button to open the marker plot export utility. Figure H.

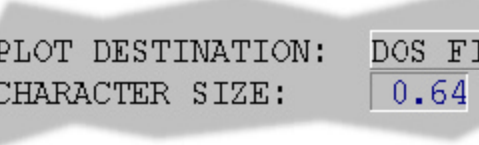


Figure J

5. Click on the **Plot Destination** button until it reads **DOS FILE**. Figure J.

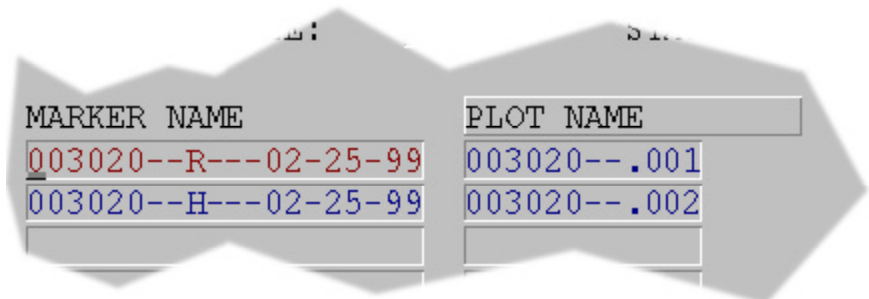


Figure K

6. Enter the plot file names in the **Marker Name** window. Use the **F4** key to browse. Figure K.



Figure L

7. After all of the plot file names are entered, click the **Process** button. The files are saved with the first eight characters of the marker name. They typically have numeric extensions like, “.000,” or “.001.” Figures K and L.
8. Exit the **System Manager** program by pressing **Exit** three times.

• **Plotting Nester Files**

A scaling factor of 101.6% is required to ensure accurate output when converting Nester plot files with the 601. This changes from Nester plotting units (1000 pu/inch) to HPGL plotter units (1016 pu/inch).

1. Load the Nester file into the 601 software as described in **Import Markers** below. Stop before pressing **Convert**.
2. Enter 101.6% into the X and Y scaling boxes.
3. Press **Convert** to prepare and send the Nester file to the plotter.
4. Optional: Press **Save as Defaults** if you want to set the default scale factor to 101.6%. This is useful if most or all of the plot files are exported from the Nester utility.

• **Import Markers**



601

1. The Ioline 601 program icon is stored in *Start/Programs/Ioline*. Start the 601 software (if it is not already running) by double clicking the program icon. The main program window will appear. Figure D.
2. Adjust the size of the X (paper motion) or Y (carriage motion) panel size in the **Size of Panels** window. The default size of 46” for X panels works well for most markers.
3. Choose the location of the files in the folder and file lists on the left side of the 601 window.
4. Left click on the desired file name then press the **Load** button. Figure M. If the **Automate** feature is enabled, steps 5 and 6 are completed automatically. See the *Command Index* for details. The size of the file is displayed in the **Size of Input File** box.
5. Check scaling and panel size values then choose **Convert** to prepare the file to send to the Ioline plotter. The 601 software creates a new file with the source file name but with a .PLX file extension. The new file is stored in the *C:\Ioline\Converted* folder. The **Output File** window will appear.

Hint: If the 601 default location was entered in the *Setup Accumark* section, the files will appear in the file window automatically when the program starts. The default file location is *C:\HPGL*

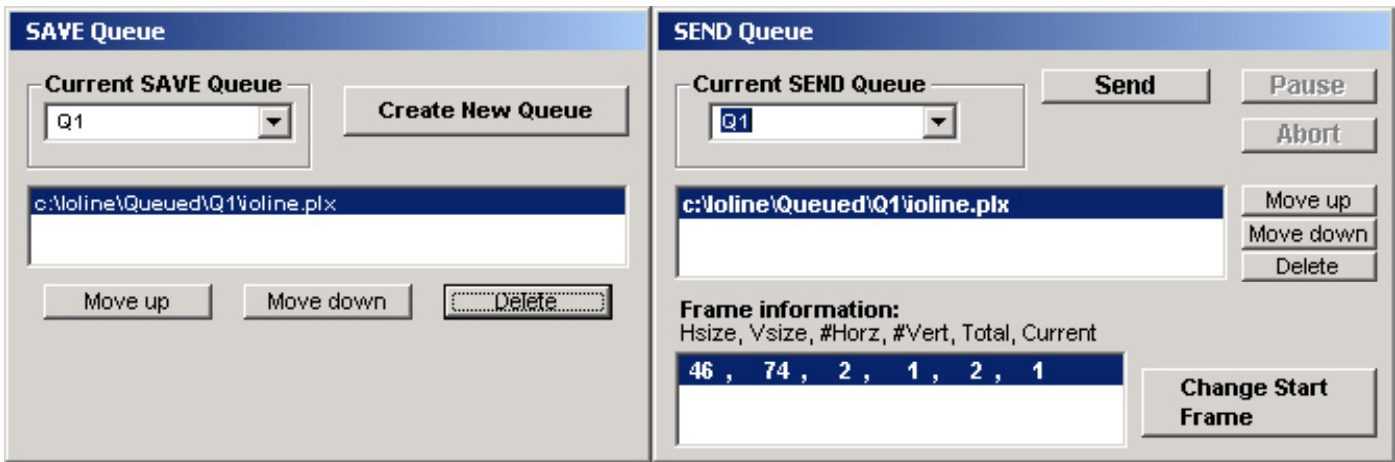


Figure M

Hint: The **Up** and **Down** buttons in the **Send Queue** move the selected file in the plot order up or down one position.

Hint: The **Send Queue** can hold many plot files. After the **Send** button is pushed, each file is plotted in the order that it is displayed in the queue. The top files are plotted first. Files added before the queue is emptied are included in the active queue.

6. Pressing **Add to Queue** to add the current file to the **Save Queue**.

• **Plot Markers**

1. Press the **Show Queues** button to show the **Send Queue** and **Save Queue** windows. Figure M. The marker added in step 6 above is displayed in the **Save Queue** list.
2. Change the name in the **Current Send Queue** box to match the name in the **Current Save Queue** box. The marker name is displayed in the send queue list. **Hint:** the file will stay in the list until the **Send** button is pressed or the file is deleted.
3. Make sure that the plotter is loaded with paper, has an **Origin/Start Point** set and that the LED on the keypad is green. Check the plotter user guide for details.
4. Press the **Send** button in the **Send Queue** window to send all of the markers in the **Save Queue** to the plotter.

Command Index

• **Options**

Automate

If this option is checked, the 601 software will automatically load, convert and send the selected file to the Save Queue when the Load button is pressed or when the file is double clicked.

Overwrite Files...

When checked, the 601 will automatically overwrite files in the c:\oline\Converted folder without asking the user.

Process DM/PL...

The 601 does not modify files written in the DM/PL language. When the box is checked, it will detect DM/PL and send files to the queue automatically without asking the user.

Command Index (*cont'd*)

• Main Window

| | |
|-------------------------------|---|
| About | Displays program and version information. |
| Browse | This window shows the current folder and drive (volume) list. |
| Convert | Converts the loaded file into Ioline plotter format. The file is automatically saved with a .PLX extension in the C:\Ioline\Converted folder. See also, Automate in <i>Options</i> . A window will appear after conversion to decide if the files is copied to the active save queue. |
| Exit | Exits the 601 software. |
| Hide Queues | Hides the Send Queue and Save Queue windows. This does not affect plotting. |
| Import File | Window showing files available for import in the current folder (Browse window). |
| Import File Type | Lists the file types compatible with the 601. |
| Load | Loads the currently selected file into the 601 software. See also, <i>Automate</i> in <i>Options</i> . |
| Load, Convert, ...All | Automatically converts all files in the current folder and adds them to the save queue. |
| Options | Displays 601 Options window. See above. |
| Plotter Control Center | Starts the Ioline Control Center software if it is installed. |
| Plotter Setup | Choose the computer communication port connected to the Ioline plotter. |
| Scale | Changes the scale of the output file. The Save as Defaults button will permanently change the scale factors to the input values. |
| Show Queues | Opens the Send Queue and Save Queue windows. All markers sent to the plotter are stored here until the machine is ready to plot. |
| Size of Import File | Shows X (paper direction) and Y (carriage direction) size of the loaded marker file. |
| Size of Panels | Displays the size of X (paper motion) and Y (carriage motion) panels. Ioline plotters support 1 to 46 in. X panels and 1 to 86 in. Y panels. A 46 in. X panel is most efficient. |
| Space Between ... | Sets the gap between subsequent markers. Range is 0 to 46 inches. |

Hint: The 601 will break a wide plot file into columns if the width (Y) of the file is large than the Y value shown in the **Size of Panels** box. Each column is stored in the queue as a separate file with the same name but with a number after each one indicating the column number. This way, the user can plot markers that are wider than the plotter.

• Save Queue

| | |
|---------------------------|--|
| Create New Queue | Creates a new save queue. |
| Current SAVE Queue | Shows which queue files are added to when the Convert button is pressed. |
| Delete | Removes the selected marker from the Save Queue list. This feature will also work after the Send button is pushed. |
| Move Down | Moves the selected marker down one position in the plot order. The file is plotted after files above it. See also, Move Up . |
| Move Up | Moves the selected marker up one position in the plot order. The file is plotted sooner than file below it. See also, Move Down . |

• Send Queue

Hint: Press the **Set Origin** or **Start Point** button on the plotter keypad after aborting a plot. This clears the memory and prepares the plotter for the next plot.

| | |
|---------------------------|--|
| Abort | Stops sending data to the plotter but plotting may continue with data already sent. Use the Start/Stop button on the plotter keypad to quickly stop the plotting. |
| Change Start Frame | Chooses which frame the machine will start plotting from. This is useful to finish a plot that ran out of paper or ink before ending. Changes are displayed under ' <i>Current</i> '. |
| Current SEND Queue | Shows which queue files are sent from when the Send button is pressed. |
| Delete | Same as Save Queue . |
| Frame Information | Displays marker data for files in the queue. |
| Move Down | Same as Save Queue . |
| Move Up | Same as Save Queue . |
| Pause | Pauses sending data to the plotter. Plotting may continue with data already sent. Use the Start/Stop button on the plotter keypad to quickly stop the plotter. Pressing Send will resume sending data. |
| Send | Sends all files listed in the Send Queue window to the plotter. |

IOLINE CORPORATION
14140 N.E. 200th Street, Woodinville, WA 98072
Voice: 1.425.398.8282 • Fax: 1.425.398.8383
info@ioline.com • www.ioline.com
Note: all trademarks are the property of their respective owners.